



# SERVICE BULLETIN

Classification: BT95-003	Reference: NTB95-041	Date: June 7, 1995
-----------------------------	-------------------------	-----------------------

## 1995 MAXIMA SUPPLEMENT RESTRAINT SYSTEM (SRS) FLASHING LIGHT

**APPLIED VEHICLE:** 1995 Maxima (A32)

**APPLIED DATE:** Vehicles built *before* August 1994

**APPLIED VIN:** Vehicles built *from* JN1CA21D7ST000301 *to* JN1CA21D7ST047800  
Vehicles built *from* JN1CA21DXST600001 *to* JN1CA21DXST601878

### SERVICE INFORMATION

When diagnosing a blinking SRS warning light (with a blinking frequency of 0.5 seconds on/0.5 seconds off *or* 3 seconds on/2 seconds off), the attached diagnostic fault tree should be followed especially when CONSULT indicates no failure detected.

If conditions indicate replacement of the SRS diagnosis sensor unit, a countermeasure (C/M) unit *must* be installed in the vehicle.

The diagnosis sensor unit is designed to monitor the vehicle battery voltage. The original unit (on vehicles built before August 1994) will send a signal for the SRS warning light to flash (user mode) if the vehicle battery voltage drops below 7.6 volts. The C/M unit still monitors the vehicle battery voltage, but will not activate the SRS warning light unless the battery is extremely low.

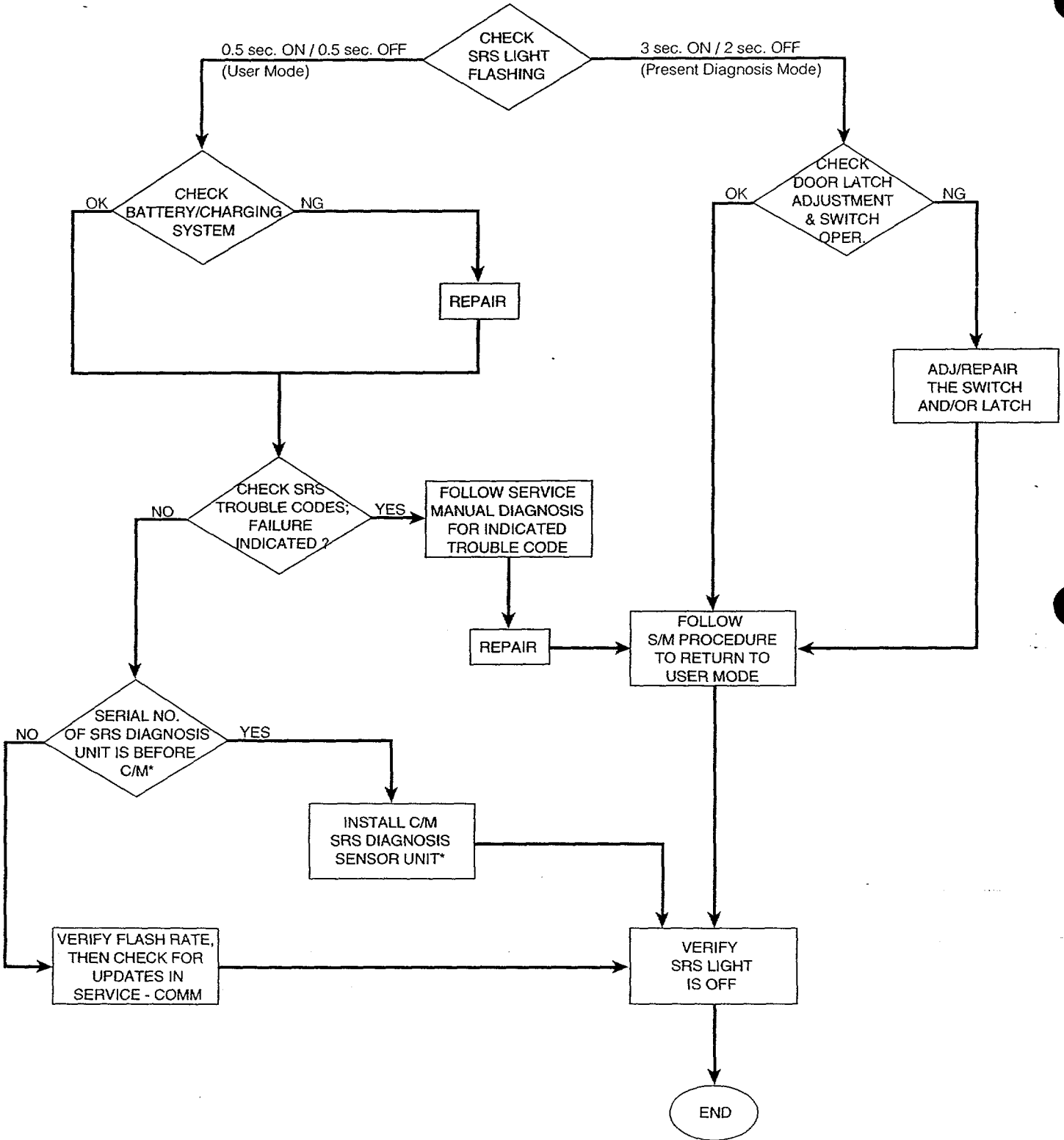
It is important to note the C/M part can be identified *only* by the serial number. The part number remains the *same* as before.

The C/M SRS diagnosis sensor unit serial number *for production vehicles* begins with:  
SE41U946170022.

The C/M SRS diagnosis sensor unit serial number *for service parts* begins with:  
SE41U948240424.

.....  
Index # 043203  
.....

# DIAGNOSTIC FAULT TREE



\*C/M Serial No. of production SRS DIAGNOSIS SENSOR UNIT begins with SE41U946170022 (~August 1994)  
 C/M Serial No. of service SRS DIAGNOSIS SENSOR UNIT begins with SE41U948240424

If vehicle already has C/M Diagnosis Sensor Unit, check for updates in SERVICE-COMM

## SERVICE PROCEDURE

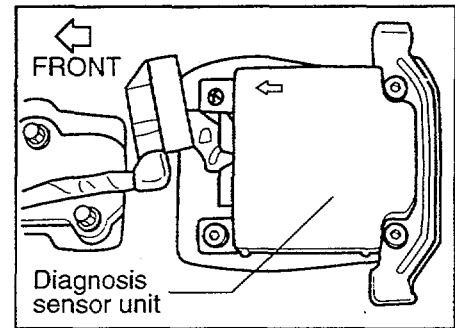
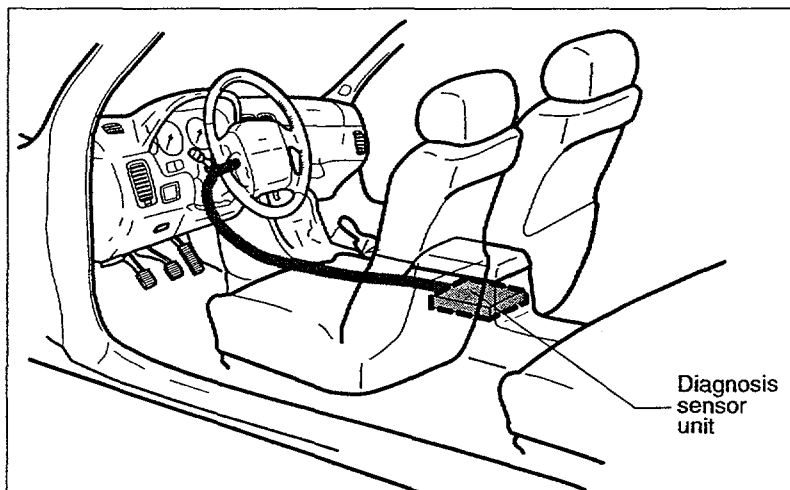
Refer to the flowchart on page 2. Perform the following repair(s) as necessary:

1. Repair the battery/charging system. It is possible that during engine cranking with a partially discharged battery (interior lights left on, etc.), battery voltage may momentarily drop below 7.6 volts and trigger the flashing light. Verify the battery and charging system is operating normally.
2. Adjust/repair the driver door switch or adjust the door latch.
3. To replace the control unit, remove the console box and replace the SRS diagnosis sensor unit. The service manual procedure is on page BF-50.

If the vehicle already has C/M diagnosis sensor unit, check for updates in Service-Comm.

**NOTE:** The SRS warning light is activated if the driver door switch goes through an open and close cycle 5 times in the 7 seconds after the key is turned on.

**IMPORTANT:** When using CONSULT, be sure to use the BACK key to return to user mode. If this is not done, the "AIR BAG" warning lamp will continue to flash after the ignition is turned on. The service manual procedure is on page BF-61.



## PARTS INFORMATION

DESCRIPTION	PART #/PFP	QUANTITY
SRS Diagnosis Sensor Unit	28556-41U25	1

## CLAIM INFORMATION\*

OPERATION	OP CODE	PNC	SYMPTOM	DIAGNOSIS	FRT
Replace Diagnosis/Sensor Unit	RQ29AA	28558	HC	32	0.3 hrs.

\*New Claims System dealers: Submit a Primary Part line claim using 28556-41U25.

**NISSAN MOTOR CORPORATION., U.S.A.**

Technical Communications Department